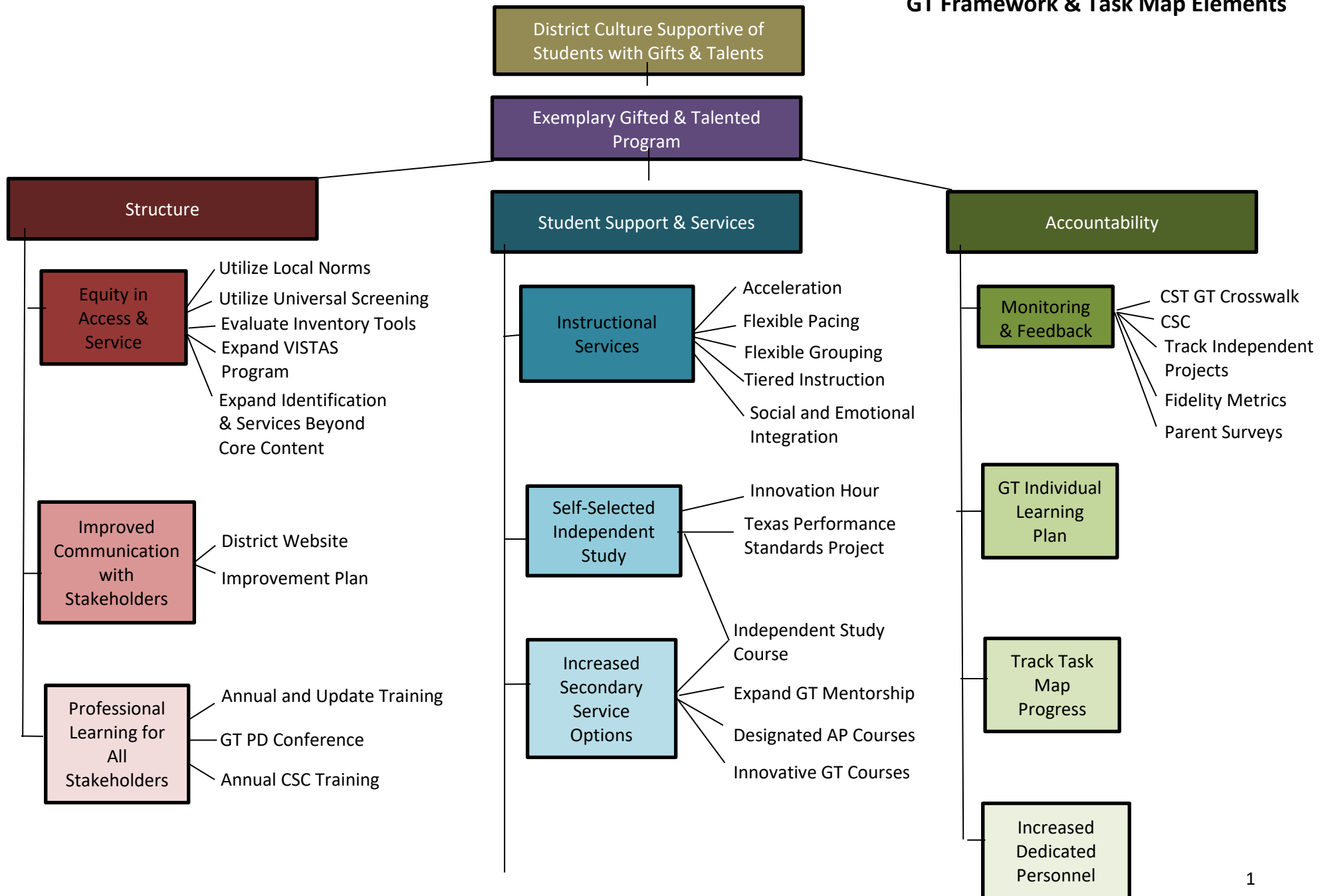


GT Framework & Task Map Elements



Glossary of Key Terms

Acceleration	Research-based instructional intervention based on student readiness and motivation enabling them to move through the traditional curriculum, mastering knowledge and skills, at a faster rate or an age earlier than the norm (Colangelo, 2004; Pressey, 1949).
Champions of Gifted Services (COGS)	A GT Teacher on each campus who serves as representation of the GT department on their campus. They serve to communicate district initiatives as well as serve as a support for campus GT teachers
Cross Walk Tool	A tool used by FBISD to gather data about the implementation of District initiatives in District classrooms.
Campus Selection Committee (CSC)	A campus committee who determines the identification of students for GT services.
Campus Support Team (CST)	A team of district- and local campus-level administrators (and sometimes campus teachers) who conduct walkthroughs of their campus. The CST team gathers data (through a CST walkthrough tool) in each classroom which is compiled to identify campus and district trends.
Differentiation	Providing the students the opportunity to make learning through own by modifying the content, the process, the product and the pacing associated with instruction.
Flexible Grouping	An instructional strategy where students are grouped together to receive appropriately challenging instruction. True flexible grouping permits students to move in and out of various grouping patterns, depending on the course content. Grouping can be determined by ability, size, and/or interest.
Flexible Pacing	Instructional practices that place students at an appropriate instructional level and allowing them to move forward in the curriculum as they master content and skills
GT Mentorship	A yearlong experience for GT seniors work with a professional mentor to hone their professional skills and launch original research including data collection using industry-standard research methodology.
Innovative Course	Innovative courses allow districts to offer state-approved innovative courses to enable students to master knowledge, skills, and competencies not included in the essential knowledge and skills of the required curriculum (Texas Administrative Code [TAC] Section 74.27)
Innovation Hour	Innovation Hour is a student-driven inquiry process (or program) that encourages students to learn about and create based on their passions. It support students in their strive to

	exhibit the attributes defined in FBISD's Profile of a Graduate through unique learning opportunities.
Learning Progression	A tool that details the arc of growth for a student throughout the course of one academic year.
Metrics	Standards by which progress towards a predetermined task or goal is measured.
Pilot Protocol	A procedure that is implemented when a program is piloted. It includes a timeline that addresses considerations such as additional subcommittee development, staffing needs, curriculum development, professional development, stakeholder communication, and selecting pilot campuses.
Protocol	A predetermined, logical method set forth to achieve a goal.
Schoology	Learning platform used by FBISD to share information and facilitate online learning of new content.
Staffing Protocol	A procedure that is implemented annually to determine staffing needs, such as teacher, student, campus-, and district-level support.
Teaching and Learning	The instructional division that maintains the FBISD curriculum.
Tiered Instruction	Instruction in which all students work toward the same goal, but activities are geared toward each student's level of understanding.
Texas Performance Standards Project (TPSP)	A set of performance standards, curricula, and assessments for differentiating instruction and deepening academic learning.
Universal Screener	Universal screening is conducted with all students at 2nd grade to identify students who may be in need of gifted services. The universal screener provides an initial view of a student's cognitive ability levels and may be used to help teachers identify students cognitive strengths.
Vistas Program	The <i>Vistas</i> Talent Pool program is designed to provide challenging learning opportunities and research-based instructional strategies to build capacity of high ability students on low-SES campuses to increase representation of diverse students in K-12 Gifted and Talented Programs.